

**Seeded boulevards** refer to boulevards that were seeded with a mixture of fine fescue turfgrass and pollinator-friendly flowers. They require much of the same maintenance as planted boulevards.

**Watering** your seeded boulevard bioswale will help ensure the success of your project. Your boulevard bioswale will require one inch of water:

- At least 2-3 times per week until you start seeing grass
- Once per week until flowers establish
- Once per month when fully mature



Bee lawn flowers interseeded with fine fescue grass at a local park in Minneapolis

**Mowing** can make your seeded boulevard bioswale appear neat and orderly while ensuring the health of your plants. Follow these simple tips for mowing:

- Mow once every two weeks in spring and fall when grass is growing at its fastest
- Mow once every three-four weeks in the summer when grass is growing at a slower pace
- Keep mower blades sharp for a smooth and consistent cut each time
- Never mow more than 1/3 the height of your grass. A recommended mowing regime would be growing your grass out to 4.5” and cutting back to 3”

**Overseeding** bare patches with fine fescue grass seed helps maintain a dense planting. Find grass seed at the link below!  
<https://tinyurl.com/umn-turf-seed>



# Metro Blooms

[www.metroblooms.org](http://www.metroblooms.org)  
P.O. Box 17099 • Minneapolis, MN • 55417  
651-699-2426

Metro Blooms is a non-profit organization whose mission is to promote and celebrate gardening, to beautify our communities, and help heal and protect our environment.



**Minneapolis**  
**Park & Recreation Board**



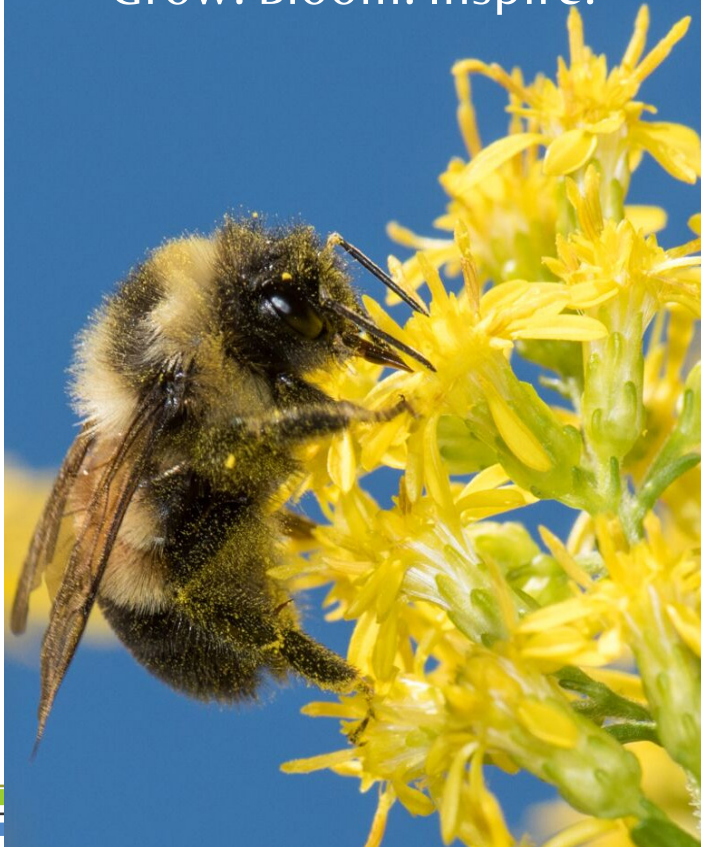
**Minneapolis**  
City of Lakes



# Metro Blooms

Boulevard Bioswale Landcare Guide

Grow. Bloom. Inspire!





**Boulevard bioswales** can be an excellent resource to improve the ecological resilience and aesthetics of your neighborhood. The diversity of beautiful plants installed in the bioswales have the potential to conserve water and provide high-quality habitat and forage for pollinators like butterflies, wild bees and honey bees. Boulevard bioswales require proper landcare to successfully provide these environmental benefits throughout your community.



A boulevard bioswale installed in summer of 2016. This boulevard features prairie smoke (pink) alongside native grasses.

**Planted boulevards** are boulevards that were installed with mature prairie plants. This includes a mixture of forbs (flowers) alongside native grasses which feature complex root systems that take up a lot of water, helping to reduce runoff.

**Watering** your planted boulevard bioswale will go a long way towards ensuring the success of your project. Your boulevard bioswale will require one inch of water:

- Twice per week during establishment (year 1)
- Once per week as immature plants (year 2)
- During times of drought as mature plants (year 3+)

**\*NOTE** Watering is only required when natural rainfall is insufficient at meeting the requirements listed above.

A rain gauge (pictured below) can help measure how much water the boulevard has received each week. If you do not have a rain gauge, place a can in your boulevard and mark it at 1” in height. Check your rain gauge once per week to determine how much irrigation (if any) is needed.



A traditional rain gauge (left) or a tuna can (right) can help to determine if, and how much, additional water is needed.

**Weed** your boulevard bioswale to remove unwanted plants that can outcompete the desired plants. These weedy plants often offer little to no value to pollinators.

### Weeding tricks and tips

- Know the plants in your boulevard. Having a mental image of which plants were installed intentionally will make it easier to recognize the weeds
- Weed at least three times per year. A good rule of thumb is to weed according to the major holidays (Memorial Day, Independence Day, Labor Day) to capture the bloom times of common weedy plants
- Get ‘em while they’re small! Smaller weeds are easier to remove, and are less likely to become a nuisance.



A healthy boulevard bioswale featuring woodland strawberry (*Fragaria vesca*) planted in 2016.

### Additional tips

- Keep your planted area free of debris/trash
- Replace plants as needed, as 10% or more may die each year. Follow the link for plants! <https://tinyurl.com/wild-ones-pdf>